

MASTERCRAFT<sup>®</sup>  
KITCHENS

# Kitchens



2023  
EDITION





# Welcome

Kristen Reid, Head Designer – Mastercraft Kitchens

## Contents

Welcome	2
Growing our future	3
Home comforts	4
Smooth move	6
High life	9
Charismatic cutie	12
Black arts	14
Lap of honour	18
Back in black	20
Summer vibe	24
Scandi dandy	26
Ocean breeze	30
Black tie	32
Full time	35
Why us?	36

We are proud to present the 6th edition of our popular Kitchens Look Book, showcasing custom joinery from around Aotearoa / New Zealand. It's only a very small taste of what our fabulous in-house designers and craftspeople created during 2022.

I am excited to see some incredibly fun trends emerging for 2023, with clients putting their hearts and personal tastes into their spaces, having noticed how much more time they have all spent at home in recent years!

We are seeing lots of colour in cabinetry, specifically bold earthy colours emerging, and texture is a must! Decorative panels with flutes or half rounds and a lot of rustic timbers are going to be very popular this year along with statement hardware like antique brass pulls. We are also noticing trends and inspiration drawing from commercial spaces which are often multi-layered. Bench tops of all materials are popular with a natural marble look – the more natural and intense looking, the better!

Our designers would love to show you the spectacular new products emerging in kitchens, bringing your dream kitchen – the heart of your home to life!

# Growing our future

We are proud to announce our significant partnership with charitable trust Trees for Survival. This initiative will see Mastercraft Kitchens contributing to the education of students whilst making a practical difference to New Zealand's environment.

Trees for Survival is a charitable trust which works with over 200 schools and local communities across New Zealand to grow and plant native trees along waterways and on erosion prone hillsides. They operate an environmental education programme which provides an opportunity for school children to rejuvenate the country's landscape as well as learn about conservation, revegetation, wetland restoration and protecting stream quality.

"We had decided that an initiative such as planting native trees was a good fit for our brand, but wanted to find a programme that stood out," says Mastercraft Group General Manager, Kevin Belz. "During our research we discovered how Trees for Survival not only gives back to the environment but educates kiwi kids at the same time. From there it was a simple decision." Adding that Trees for Survival has a plan to further grow the number of schools that it works with throughout New Zealand, Mr Belz says, "We look forward to assisting with the growth of TFS through bringing on new schools, attending planting days and promoting the programme to our large network of commercial partners, and current and future customers."

Trees for Survival is also delighted with the new partnership. National Manager for TFS, Dennis Millard says, "It's always a rewarding experience to have supportive and active sponsors helping us deliver the Trees for Survival

programme. Our focus is on local environmental restoration projects through native tree plantings, by local schools and their local community. So, on planting days especially we enjoy having staff from our local Mastercraft Kitchens involved, helping out, and giving back to the environment".

This is a long-term strategic decision for Mastercraft Kitchens to align themselves with Trees for Survival and the work they do to educate young New Zealanders whilst making a positive and extremely necessary difference to our unique New Zealand environment. Each location is a locally owned and operated business, often with family at the core of their operations. Kevin Belz talks of the clear values that run through the organisation, with particular attention paid to being 'Grounded and 'Passionate.' "Being down to earth is paramount in everything we do," says Mr Belz, "and when it comes to being passionate about joining forces with Trees for Survival, we're in boots and all".



Mastercraft Kitchens National Operations Manager Dave Wilson at a planting day on Mauao, Mt Maunganui with students from Omanu School.





# Home comforts



If the kitchen is the focal point of a house, then the layout and design are a crucial part of making a house a home. This kitchen is a prime example of that, with space and lighting merging together to create a homely yet luxurious ambience.

The elegance of this kitchen reflects the skill of James Donaldson, the designer behind the renovation. While keeping the characteristics of the house, originally built in 1910, Donaldson has added a contemporary touch with the slate matt benchtops and classic white satin cupboards.

To connect the kitchen to the home, the bay window base reflects the same grey panels as the island and vertical cupboards.

The cabinets have Blum hideaway soft close mechanisms that prevent accidental slamming of cupboards and protects little fingers from

being jammed. The steampunk inspired Hafele handles are a practical design feature.

A wide 900mm hob and oven, along with generously wide drawers on either side, help project the expansive feel of this kitchen.

The scullery, to the right of the fridge, presents an ideal hideaway for storage and food preparation with the extra sink and stainless steel benchtop making prep a breeze.

This kitchen has the perfect juxtaposition of warm and cool tones merging to create a unifying space. A mixture of the original structure of the house, ample lighting, and the choice of the beautiful 'Kreta' grey bench tops and painted glass splashback all tie in exceptionally well to create a spectacular yet homely kitchen.



MORE ON THIS  
KITCHEN





# Smooth move



A minimalist kitchen is a great way to bring some balance and ease into daily life. This kitchen is a prime example of keeping things simple, yet fresh with its light and airy vibe and clutter-free space.

Grace Dear, the designer behind this beautiful kitchen has created this tranquil space by combining soft, light colours and working with the natural lighting of the room. As per the customer's request, she has incorporated shaker and country styles in this classic kitchen.

While the design of this kitchen is simple, it remains pleasing to the eye. This is due to the clean-cut cabinetry in beautiful Dezinga White texture. A splash-back of white brick wall ceramic tiles gives the kitchen added character while also adding the benefit of hassle-free cleaning.

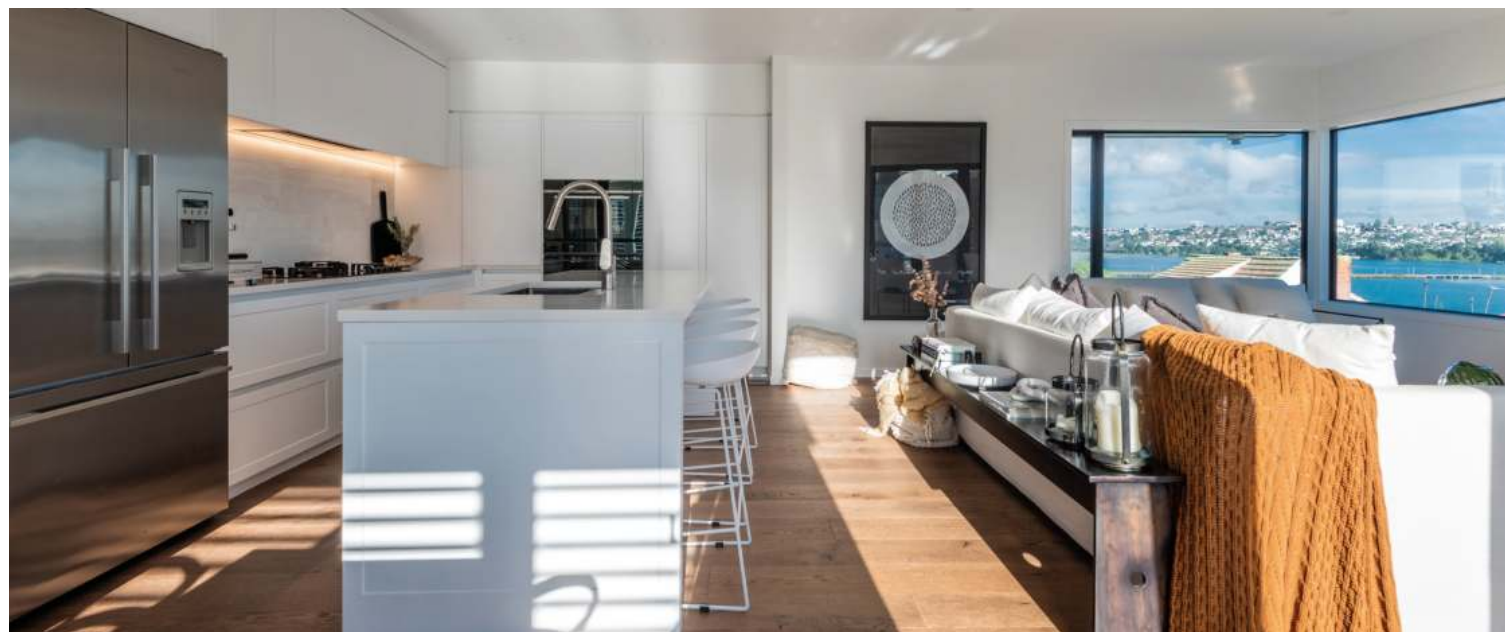
A scullery slots perfectly into this already practical kitchen providing an invaluable space for appliances, additional food storage and other kitchen necessities. Sculleries are crucial for keeping the main kitchen clutter-free without having to make the sacrifice of cutting down on favourite appliances.

The simple white of this kitchen's benchtops and cabinets all tie in perfectly to create a clean and crisp environment, a fresh new take on a classic timeless kitchen.



MORE ON THIS KITCHEN





This project required redesigning a whole house in a stunning Auckland location, with a beautiful view over the CBD. Designer Velyade Kirmach was tasked with reconfiguring and modernising the kitchen, bar, wine cellar, bathroom, laundry and wardrobe areas.

The client wanted to keep the traditional look of the kitchen, but update it to create a timeless, enduring appeal. There are large windows in the area and a traditional kitchen complements the existing space. The idea of combining the style of shaker profile doors with a handleless channel profile and push-to-open mechanism running across the cabinets achieves the desired modern look.

There is plenty of natural light coming into the room therefore the monochromatic colour scheme has primarily been used. The bar is made from melamine black timberland to contrast with the white in the main kitchen area. The same material is used in the

wine cellar to keep consistency throughout the house.

The Caesarstone white snow benchtop works in harmony with the white cabinetry to compliment the style of the room.

A simple splashback was added to complete the look. The plain off-white tiles with a tasteful pattern and white grout adds just enough detail to make a statement. The cabinetry itself has the "wow" factor and creates the main event in the room so the splashback is there to support with neutral tiles and avoids overshadowing or competing with the cabinetry's detail.

With all these features combined, we were able to create the clients desired timeless aesthetic.



MORE ON THIS  
KITCHEN



# SUPER FEATURE





# Charismatic cutie



Quality over quantity is the theme with this charismatic little kitchen – a smaller space that is jam-packed with character and utility.

Working with the space provided, designer Amber Downie has created a tranquil Hamptons style kitchen that brings such immense life and character to the space. Resene Half Rice Cake Satin was chosen for the perimeter cabinets – all made from durable timber, lacquer and T&G panels. Complementing this, Resene Dusted Blue Satin cabinetry was used for the island and overhead cabinets – the pop of blue sits perfectly with the white of the benchtops, main cabinetry, and splashback.

The island bench slots perfectly in the centre of the kitchen with its beautiful Michelangelo engineered stone benchtops which catch the natural light from the window and brightens the whole space. The addition of a second sink in the island bench creates ease of access to water without the effort of having to walk around the island.

There is space beneath the island bench to fit two bar stools which can be tucked out of the way – the perfect little hide away for such a charming kitchen. Throughout this kitchen, in fact, you'll find many nooks and crannies. A turntable corner cabinet, for example is a genius way to store pots and pans with exceptionally easy access, with a simple manoeuvre to reach the items in the back without the unnecessary strain.

This entire kitchen has been thoroughly thought through, from storage solutions to the cosy atmosphere it radiates. Adding a little slice of serenity, built-in window seating and a buffet sit across from this lovely kitchen.



MORE ON THIS KITCHEN



SUPER FEATURE

# Black arts



Overlooking Lake Wanaka, this exceptional home showcases the very best of design excellence from Mastercraft Otago.

Mastercraft Kitchens Designer Bronnie Thompson (working with Bryce Monk of Threefold Architecture) settled very early in the process on a galley kitchen layout to ensure the incredible views over the lake could be easily enjoyed by the owners.

The large island, made from Dekton Porcelain features an angled frontage and stunning waterfall ends. It has a chiselled quality and, although constructed, looks to be expertly hewn from a single block. On top, a Burns and Ferrall Orizuro tap looms over a matching Burns and Ferrall Cayman double bowl sink in beautiful Rio Bronze. To the cook's left, a Gaggenau induction cook-top with downdraft ventilation continues the island's minimalist aesthetics.

Over on the back wall, the cabinet exteriors are crafted from Prime White Oak and stained to black. A mixture of recessed handles, to access the Fisher and Paykel double door fridge, and push-to-open doors for the other cabinets, ensures the clean elegant look matches the central island.

A lovely interplay between LED lighting and the Glass Art splash-backs ensures the magic continues either side of the central cabinet structure.

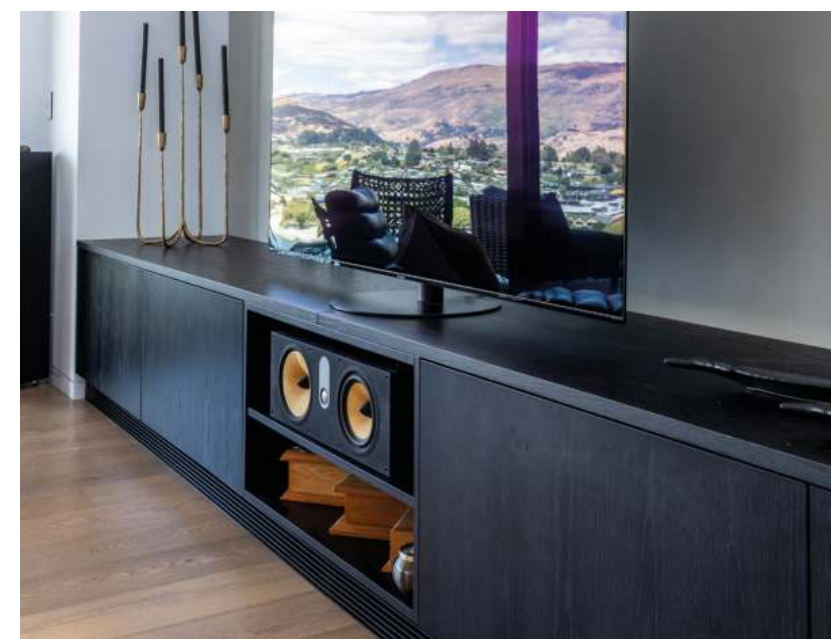
The design wizardry continues throughout the balance of the house with similar treatments in the media room (entertainment unit), walk-in robes, bathrooms, laundries and a kitchenette in an attached suite. The kitchenette cleverly switches sides and presents in stunning white for a playful contrast.



MORE ON THIS  
KITCHEN



SUPER FEATURE





# Lap of honour



Contemporary or country? How about contemporary country and have it both ways? This incredible country-style kitchen from Mastercraft Kitchens Palmerston North (Kitchens by Healey) shows what can be achieved with this style.

From the wooden tongue and groove ceilings to the white timber shutters this whole house exudes country charm and elegance. Being the centrepiece of the home, the kitchen had to deliver on a grand scale and designer Josh Cooper has hit the mark.

The wrap-around cabinets are notably all drawers allowing for greater storage and accessibility than the traditional mixture of drawers and cupboards. The exteriors are Dezianteck finished in Lana Grey Satin. The Archant handles support the country theme and provide a nice contrast to the beautiful white panelling on each drawer.

Topping the cabinets is a Silestone engineered stone bench in Lagoon colour. The 50mm thick polished stone radiates solidity and timelessness.

A Burns and Ferrall black sink with Plumblin tapware crowns the centre island, again in Lagoon Silestone but now with cabinetry finished in Dezianteck Slate Matt and featuring thick skirting boards.

The Asko cook top sits under a custom made lacquered range hood cabinet concealing a top-of-the-line Bosch extractor while vertical Smeg ovens sit in a floor-to-ceiling cabinet that also houses shelves for those necessary cook books.

An expansive scullery sits to the right of the kitchen behind a sliding – you guessed it – barn door. Echoing the style and quality of the main kitchen, the scullery offers more wrap-around bench space, an extra sink for food prep and a handy on-bench pantry.

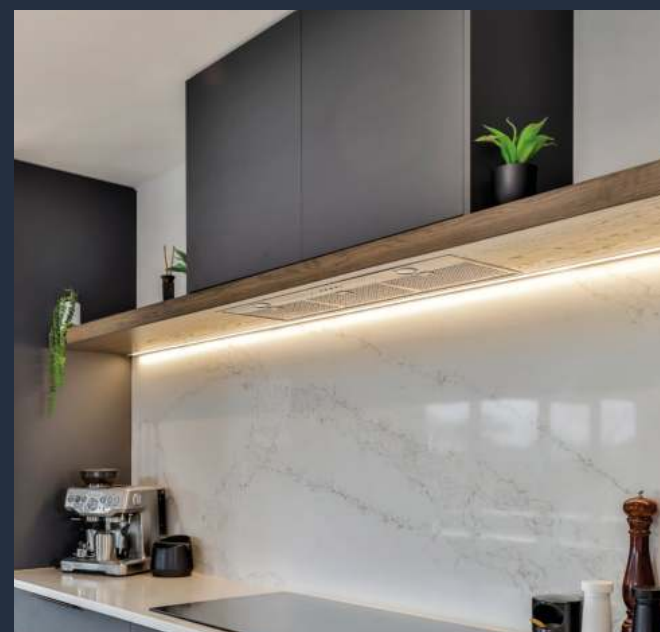


MORE ON THIS KITCHEN



SUPER FEATURE

# Back in black



When Anne Finlayson, designer for Mastercraft Kitchens Southland, began this project she was tasked with creating a functional, elegant and luxurious space to complement this luxury build.

To begin with, Anne chose AGM Uniquartz Stone with a sleek veined organic pattern as the benchtop material for both main benches. Framing the island bench is an American White Oak breakfast bar constructed from 70mm solid timber and featuring two, arris-joined waterfall ends. This chunky construction conveys a rock-solid permanence. Above the Burns and Ferrall sink, a practical utility channel also features an extra tap for hand wash or detergents.

Over on the back wall, the Uniquartz Stone reappears in the form of a large, wall-to-wall splash-back, beautifully underlit with LED lighting from the range hood shelf above which also features the American White Oak and enhances the visual connection between the two benches.

The clever flat grey acrylic panels are courtesy of Laminex and offer a practical, toned-down base to proceedings. Acrylic panels are fingerprint resistant, extremely durable and easily cleaned with a simple wipe. All doors and drawers are of course soft-close, with push-to-open above the bench and discrete Archant Furnipart Straight Edge lip black handles on doors and drawers below the bench line.

The bi-fold doors to the left of the oven hide a big secret – the walk in pantry. This treatment allows the kitchen to maintain its minimalist vibe without skimping on practicality.

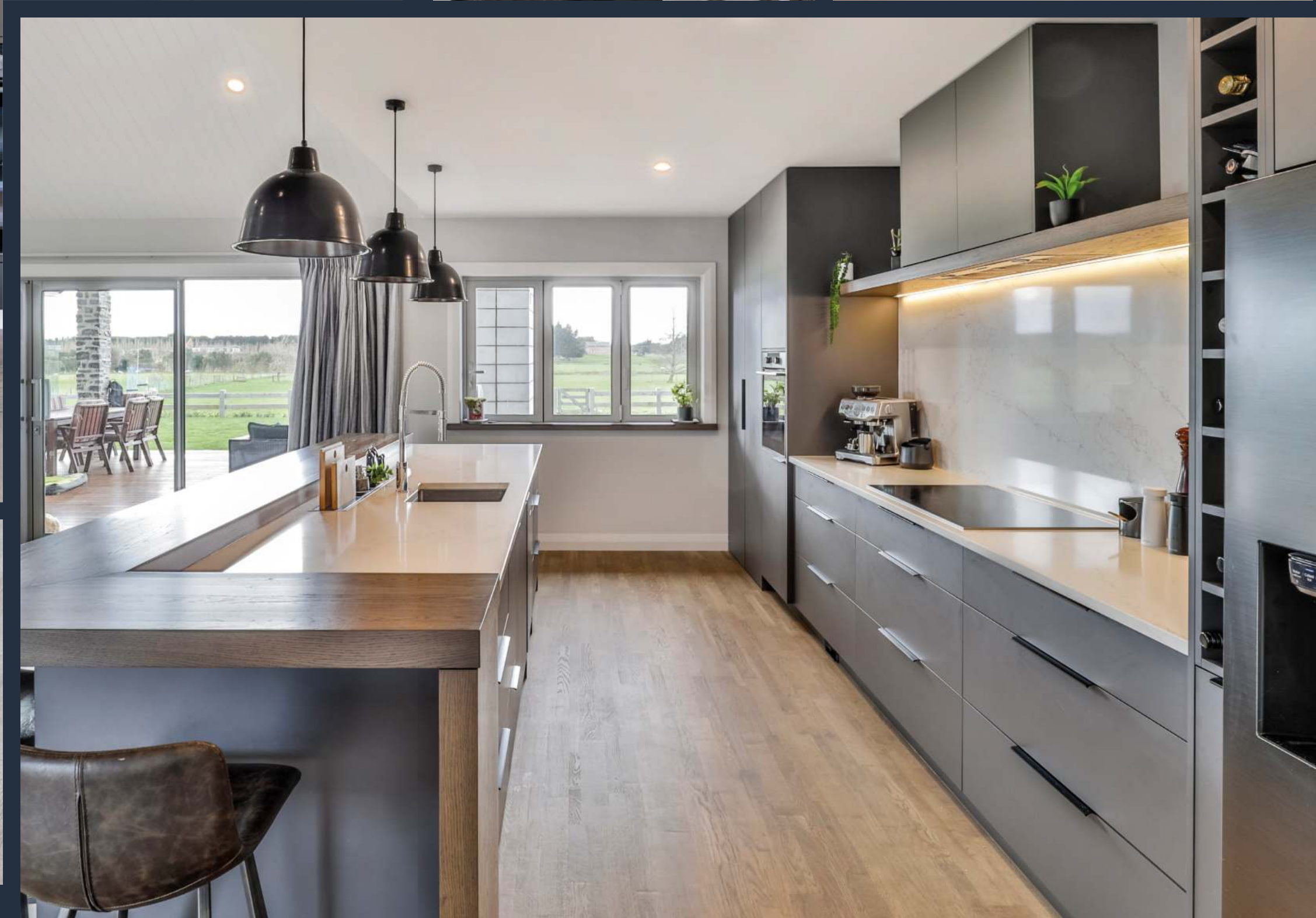
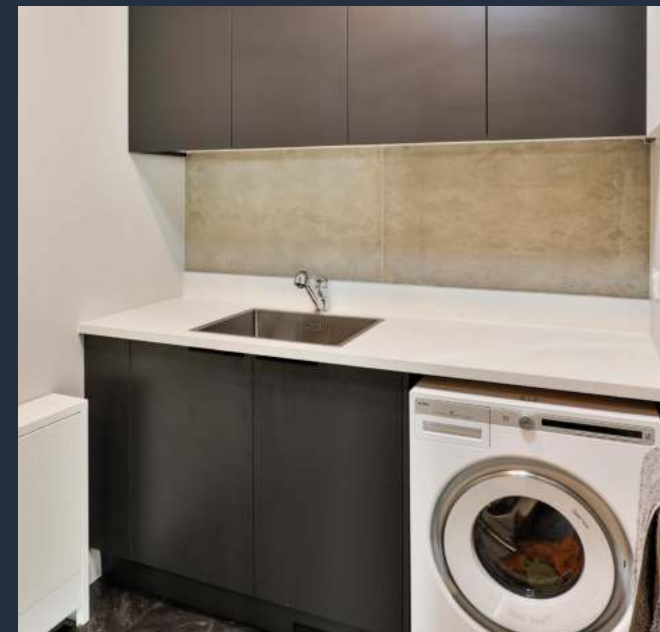
Again, when you have a good thing going, why stop? An entertainment wall, laundry and office were all designed and built by Mastercraft Kitchens Southland to extend this sensational theme throughout the home.



MORE ON THIS  
KITCHEN



# SUPER FEATURE





# Summer vibe



It's been said that 'simplicity is the ultimate form of sophistication'. This beautifully proportioned kitchen from Jes Gordon of Mastercraft Kitchens Tauranga is a great example of that view.

Jes has mixed subtle colours and textures to create a multi-layered kitchen. Dark and medium grey cabinets combine with a suede finish Silestone bench in Eternal Serena to form the functional layers while the textured splash back and overhead cabinet doors (in Classic Oak Puregrain) add texture and character to the look and feel of this kitchen.

A large walk-in scullery to the left of the centre island caters for the inevitable overflow and at the same time allows the main kitchen to sit at a comfortable size with a more compact work triangle.

A double stainless steel sink from Acero and a dishwasher sit island-side while cooking services are handled by twin Fisher and Paykel wall ovens and a 900mm induction cook top.

The same theme and materials are echoed throughout the home with a laundry and office nook benefiting from the Mastercraft halo effect. Less is more, and while this kitchen doesn't skimp on utility, the overall visual impact is one of restraint, elegance and quality.

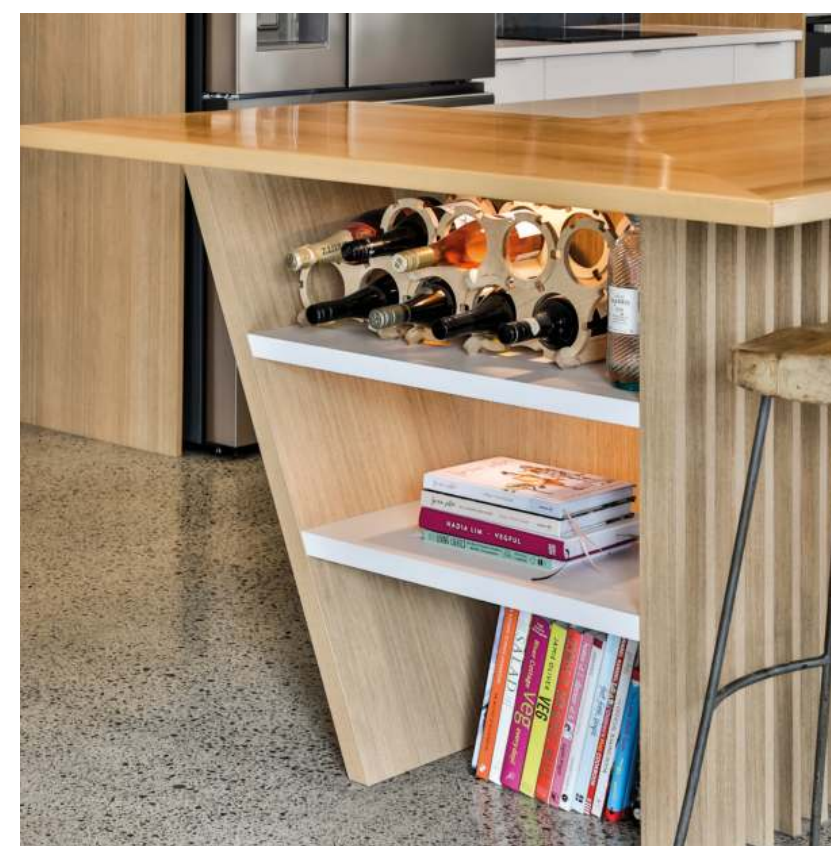
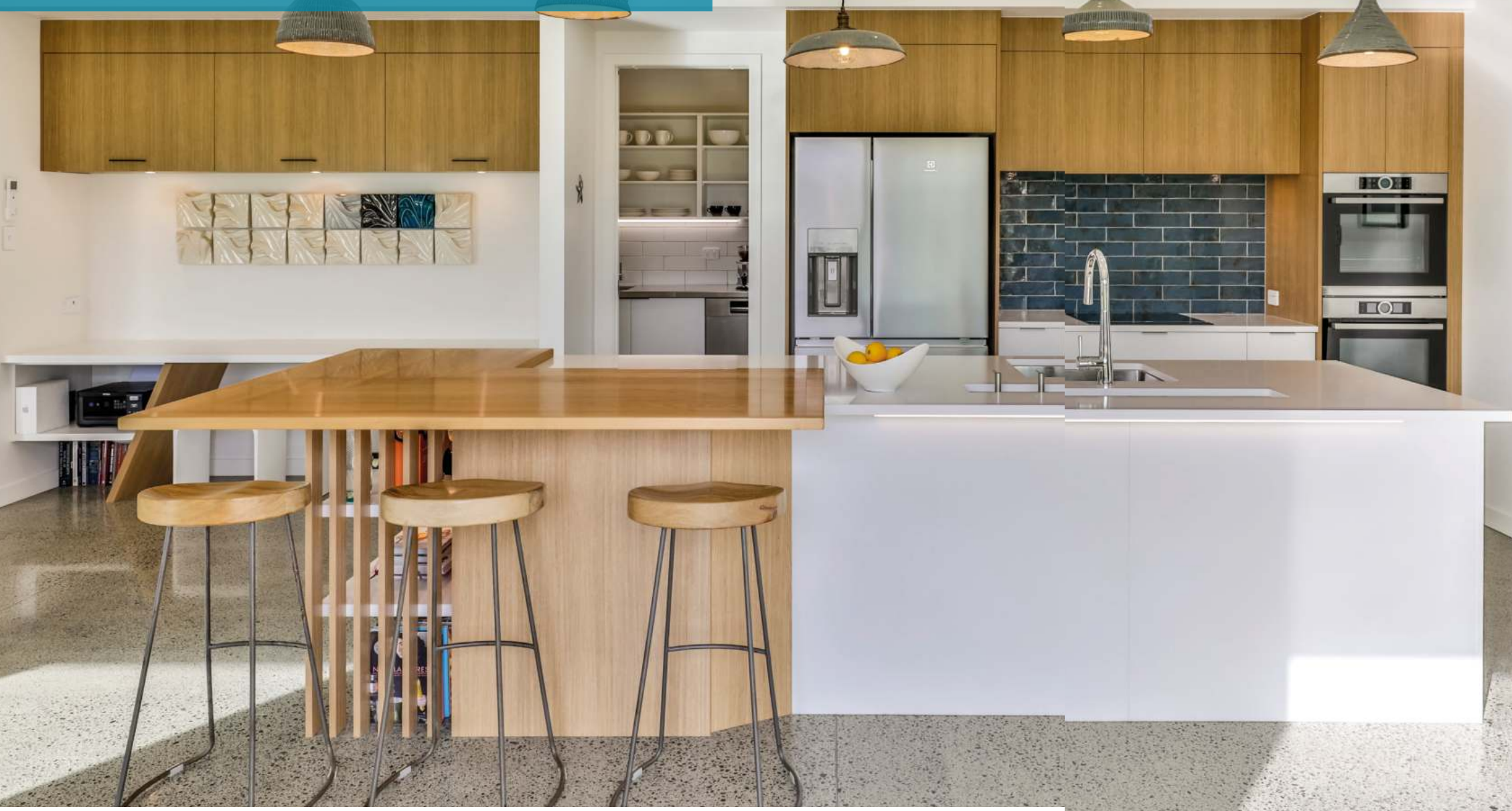


MORE ON THIS KITCHEN



SUPER FEATURE

# Scandi dandy



Something very special was required for the heart of this award-winning Tamahere new build so the owners turned to designer Gleniss Kehely from Mastercraft Kitchens Waikato for a touch of magic.

The simplicity and natural beauty of the Scandi style very much appealed to the owners. Scandi style typically mixes very light or white expanses with light wood grain and texture. Like all minimalist styles it's a difficult balance to get right, especially when the brief called for cabinetry solutions throughout the home.

As a starter, the polished concrete floors were a match made in heaven for this kitchen, providing a solid yet subtle texture that complements the white cabinets and benchtops.

Building up from that, the kitchen cleverly interplays Melamine Sublime Teak and Malibu cabinets, Woodsmiths USA Ash for the corner benchtop, and Silestone White Storm English Stone for the main benchtop.

To break the geometric style, some subtle angles were employed, just under the solid wood bench, and on the homework nook shelving. The wooden slat frontage also adds interest and the white shelves provide a colour and texture balance.

Above the stainless steel main sink is a Burns and Ferrall Panama Accessory Channel. These channels are plumbed in and allow a mix and match approach to your food preparation and cleaning needs.

The balance of the house, including the homework nook desk and overhead cupboards, two entertainment units (one with a hand painted backdrop), and a spectacular laundry fitted-out was also treated to the magic Mastercraft touch.

This kitchen was designed and manufactured by Mastercraft Kitchens Waikato in conjunction with eHaus Waikato / Brown Construction, Dean Baldock / The Architecture People, and Kim Forkert from Parkhurst Designs.



MORE ON THIS KITCHEN







# Ocean breeze



Situated right on the coastline and taking in expansive views across Mercury Bay, this stunning rustic-style kitchen in Whitianga has been designed to hit the perfect balance of practicality and personality.

Designed by Mastercraft Kitchens Whitianga co-owner and head designer Carol Harker, the kitchen wraps around a central island and offers oodles of storage space for the most industrious of chefs or bakers. A two-tier revolving 270° corner storage unit takes full advantage of a difficult corner space and a handy mixture of drawers and cupboards ensures there are convenient options for appliances, utensils, and other items.

An open-door scullery sits to the right of the island and offers a more private space to store pantry items and conduct food preparation. An LED underlight running around the perimeter of the overhead shelving provides exceptional task-lighting.

All this functionality leaves the central island free to work as a communal hub for mid-morning coffee chats or as an after-school homework space rather than as a utility element.

The benchtops are polished 30mm Pacific Quartz in Pebble Sand and the cabinets are shaker-inspired Rhonda Deignatek with a with profiled edge in Tusk Satin. To complement the cabinet doors, Enko Stefano handles and knobs were specified.

This immaculate kitchen fit-out is another masterpiece from Mastercraft Kitchens Whitianga. Carol Harker and Tony Wilson have spent the last twelve years building an enviable reputation as leading designers and producers of high-end and bach-style kitchens across Whitianga and the wider Coromandel.



MORE ON THIS  
KITCHEN



SUPER FEATURE

# Black tie



Sometimes good design is all about making a bold statement. But equally a great design can be more subtle, understated, restrained.

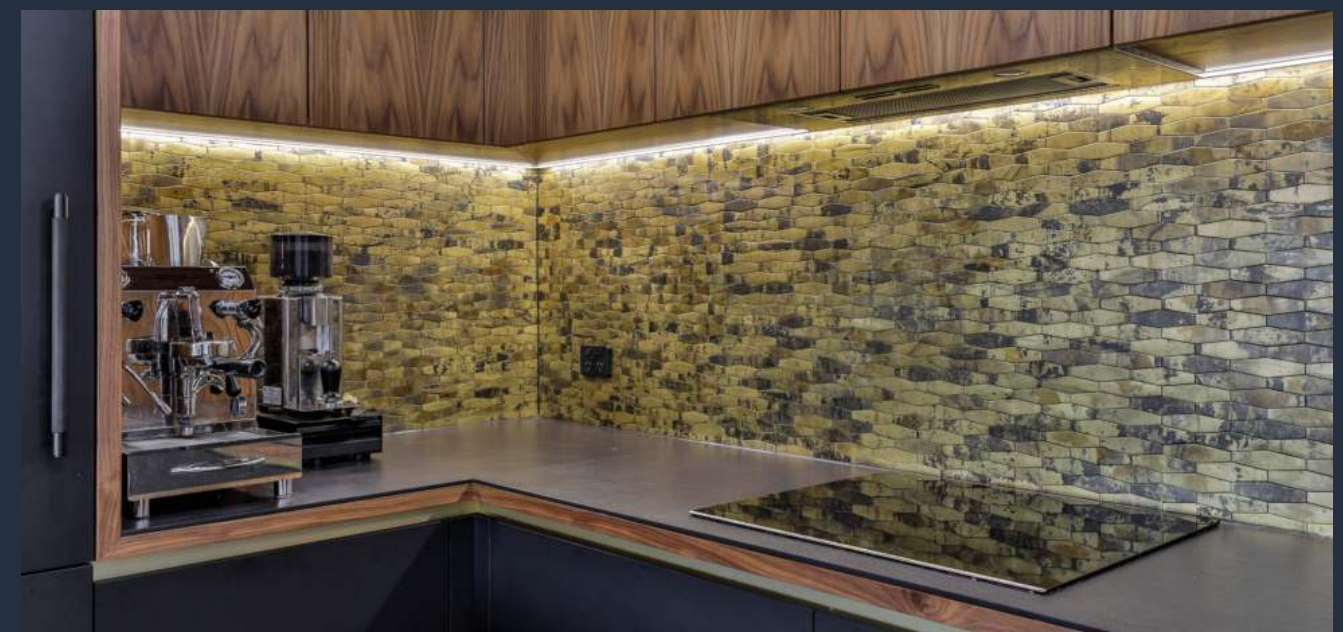
This beautifully crafted kitchen by Gavin Campbell (Mastercraft Kitchens New Lynn) is a great example of the latter. The central island in Matt Blanc stone is cleanly chiselled and unfussy. The elegant brass tapware sits over an Acero white sink and reflects the brass themed tiles of the stunning splash back a few steps away.

The corner cabinets in matt black and walnut are recessed into the background here with the under-cabinet LED lighting creating a warm and welcoming glow. Archant handles adorn the key cabinet doors with Gola profiles on the balance.

Speaking of balance, the whole home continues the theme of this beautiful kitchen. A matching wine cabinet sits near the dining area, completed in the same walnut finishing, the Matt Blanc stone returning as a backing to the glass shelving. Elsewhere the same materials are used in the bathrooms, walk-in robes and bedrooms.

One of the many reasons to use Mastercraft Kitchens is that the same materials, colours, and styles can be incorporated throughout the home creating a seamless experience.

Of course great design is more than just rinse and repeat. Our Mastercraft designers will quickly and effortlessly get you from a blank canvas to a sensational concept – one that resonates with you and reflects your personality and style.



MORE ON THIS  
KITCHEN





SUPER FEATURE



Full time



Packing a lot into each day, Caine and Rebecca Varley wanted a kitchen that could keep up with their busy schedule. The team at Mastercraft Kitchens Whangarei delivered a quality performance from whistle to whistle with this funky and functional kitchen solution.

The cabinets are Melteca New Graphite and are topped with 20mm polished Silestone in Ariel. Elegant and discreet Archant straight edge Brushed Anthracite handles are positioned on the pull-to-open drawers with push-to-open cupboards above the bench featuring Blum hardware. Over on the sidelines, 30mm Melamine open shelves in Prime Smokey Oak provide a spot for books, mementos and half-time drinks.

Rebated LED lighting under the overhead cabinets and open shelving reflects off the polished tiled wall splashback which wraps around two walls. The Silestone benchtop features a matching stone upstand behind the Ikon Iron undermounted sink.



MORE ON THIS KITCHEN





# Why us?

## Your full service kitchen specialists

At Mastercraft locations nationwide, we provide a full service solution to all of your kitchen and cabinetry requirements. We offer modern showroom displays, extensive colour and material selections, award winning designers and in-house manufacture and installation. We can also coordinate with your subcontractors for a seamless kitchen experience.

## New Zealand's largest kitchen network

Mastercraft are proud to be New Zealand's largest network of locally owned and operated full service kitchen specialists. With size comes knowledge, experience and better buying rates.

## Locally designed, manufactured & installed

Our extensive operator network means, no matter where you reside or where your kitchen project is located, we provide design, manufacture and installation services in your area.

## Exclusive Transferable (between owners) 10 Year Guarantee

Each Mastercraft location guarantees their products, manufactured in-house, to be free from defects arising from faulty workmanship, for each and every owner of the property, for ten years from the date of installation. Terms and conditions apply and can be viewed on the Mastercraft Kitchens Guarantee page.

**MASTERCRAFT**  
KITCHENS

## Award winning designs

The Mastercraft Group are multi award winners of the National Kitchen and Bathroom Association and Master Joiners Awards.

## Trusted by leading home builders across the country

The Mastercraft Kitchens Group are trusted as the exclusive kitchen supplier to many of New Zealand's leading house building brands.

## Take the next step

Download our KITCHEN or ELECTRICAL Renovation Guide today. Just follow the QR codes for the link.

