

Kitchens

MASTERCRAFT[®]
KITCHENS



2021
EDITION



Welcome to our 2021 Look Book

We are excited to bring you the 5th edition of our very popular Kitchens Look Book, showcasing custom joinery from around Aotearoa. It's a mere taste of what our wonderful in-house designers and crafts-people created during 2020.

With locations throughout NZ, we are a tight-knit team of experienced designers and cabinetmakers, who specialise in bespoke kitchens and joinery.

We collaborate with our clients to create kitchens that suit each family's unique needs and desires. We bring you trending styles as well as classic looks and materials, partnering with the best suppliers in the industry. Each kitchen we create is locally made, unique, premium quality and comes with a 10 Year Craftsmanship Guarantee.

We hope you enjoy our 2021 kitchen collection. For more photos, scan the QR codes on each page with your phone camera (no app needed), or visit www.mastercraft.co.nz.

Check out kitchenlookbook.co.nz for this and all previous Look Books in digital format.

Happy kitchen planning!

Kristen Reid, Head Designer –
Mastercraft Kitchens



Dark Delight



SCAN ME

A rich, dark palette was the order of the day for this new-build kitchen, positioned in an open-plan space that enjoys a stunning view of the harbour in Whangamata.

This is a practical and versatile design that includes an on-bench pantry with hideaway doors that tuck out of sight, and when closed look super sleek. The generous island bench facilitates social connection and the ability to enjoy the fabulous view.

Employing great lighting and materials that offer visual interest are important considerations for a dark kitchen. This is beautifully demonstrated here with a granite benchtop that has a captivating, marbled effect, and which pairs harmoniously alongside the black cabinets.

The colour and texture of the brass mosaic splashback and the brass-look back wall of the pantry is a sumptuous feast for the eyes, and when lit up creates real 'wow-factor'.

Benchtop: Pacific Stone - Granite Negro Rosso, Leathered

Cabinets: Bestwood - Recessed Black Melamine, Wilderness

Hardware: Blum - Legrabox, Onyx

Sink: Archant - Kaikoura Single 1000-10 Nero

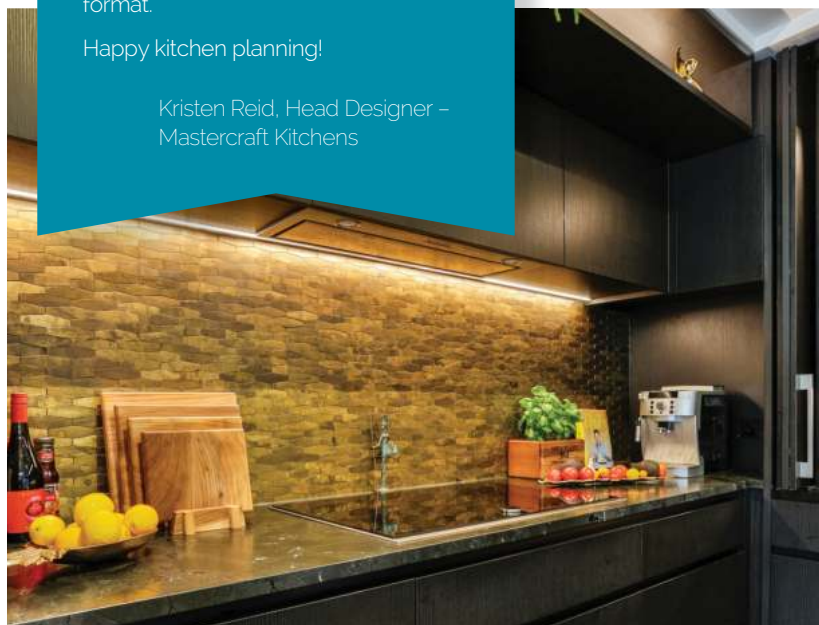
Splashback: Tile Space - Brass Polygon Mosaic Tiles

Pantry Wall: Laminex - Brass-Look Formica

Acknowledgements: Architect - Paul Spooner, Builder - Artz Architectural Builders

By Mastercraft Kitchens Whangamata

Designed by Carly Mohan-Druce





Perfect Harmony



Balance – one of the great design skills, was critical for this renovation project in order to achieve perfect harmony between an old villa and its new extension.

Using the floor as a design cue, where original timber meets new concrete, the island bench has a concrete-look stone benchtop with an inset wooden chopping board. At the party end, a clever in-bench ice-bucket has been cut in (transforming back to usable bench space when the lid is on).

Integrating the fridge and rangehood achieves a seamless wall of cabinetry, with visual interest and depth provided by the textured tile splashback.

Big on entertaining, this family's former kitchen was converted to a fully equipped butler's pantry to create clear space for guests and serving food. We love the dedicated drinks and coffee station positioned close to the dining area but out of the way of 'the action'.

Scan the QR Code to see more on this kitchen and other bespoke joinery by Mastercraft Kitchens throughout this home.

Benchtop: Caesarstone - Rugged Concrete with Inset Rimu Chopping Board by The Woodsmiths

Cabinets: DeSIGNatek - White Flat Panel

Hardware: Blum - Antaro Drawers

Handles: Archant - Swan, Antique Grey

Integrated ice bucket: Schock Sink Mono D-100XS in Quartz

Splashback: White Subway Tiles

Electrical: HPM Life Series Sockets & Switches

By Mastercraft Kitchens Pukekohe

Designed by Kim Primrose



Modern Farmhouse

Creating a timeless kitchen and laundry to tie in with the industrial farmhouse theme of this new home was the brief from this family in North Canterbury.

Marrying old and new world colours, textures, and materials together, has resulted in a welcoming rustic yet modern kitchen for a busy family who love to entertain. The island bench is a 'hero piece'. Almost furniture in its own right, it is built of reclaimed timber, topped with a Neolith porcelain benchtop.

This is juxtaposed against a sleek, minimalist working zone, featuring a highly durable and practical honed-granite benchtop in black.

The practical surfaces and rustic features continue through the scullery and into the laundry and mudroom where materials have been cleverly placed, and are perfect for their purpose.

Island Benchtop: Neolith Porcelain, Estatuario

Back & Scullery Benchtop: Natural Granite, Zimbabwe Black Brushed & Flamed

Island Timber & Scullery Shelves: Oakleigh Fine Furniture

Cabinets: Flat Panel Dulux Okarito, Satin Lacquer

Hardware: Blum - Antaro Dual Drawers, Orga Line Cutlery Drawers, Bottle Store Set

Sink: Archant - Robiq 700-10 (9077SA)

Electrical: PDL Iconic Sockets & Switches

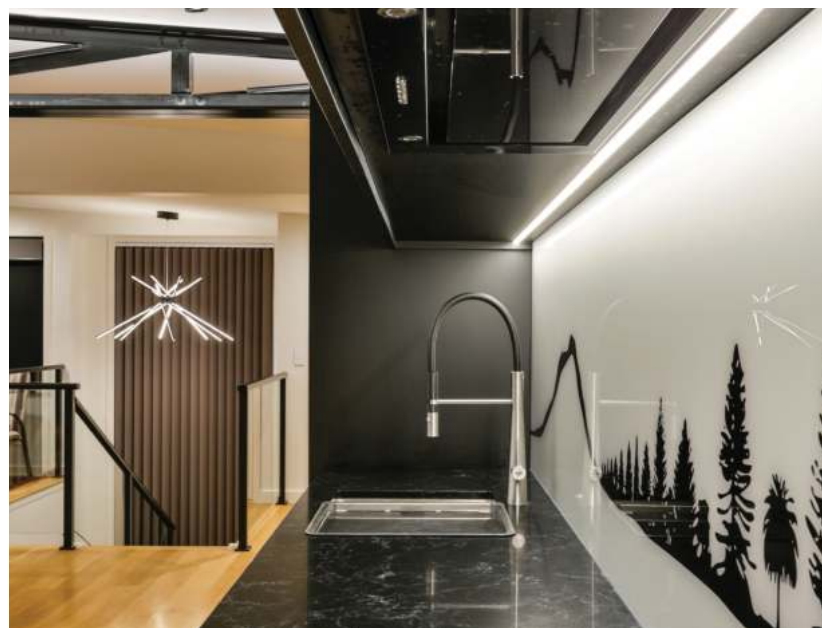
Acknowledgements: Mike Greer Homes North Canterbury

By Mastercraft Kitchens North Canterbury

Designed by Kristen Reid



Smooth Operator



Scullery

Restraint is a design technique that takes a 'less is more' approach - allowing simple, clean, and uncluttered elements to speak their quiet beauty. This contemporary kitchen is an exquisite example of restraint, in its uncomplicated and elegant design.

For an interesting space with a pitched roof, a unique format was created to achieve desired social and spatial outcomes.

Placing the scullery behind the kitchen allowed room for an island bench with dedicated wine fridge to take centre stage, where the homeowners can enjoy their magnificent views and socialise with ease.

Exposed black steel trusses provided design cues, resulting in a monochromatic colour scheme with clean lines, that are uninterrupted by integrating the kitchen appliances.

This simplicity allows the feature art splashback to really make an impact.

Benchtop: A1 Benchworx - Babylon Prime Stone Zeus
Cabinets: Laminex - Melteca Acrylic Soft Touch Pitch Black
Special finishes: Powder-Coated Aluminium Frame Under Island Bench, Negative Detail Around Island Bench
Lighting: Warm White LED Under Wall Units
Splashback: Glass Art - Print Under Glass

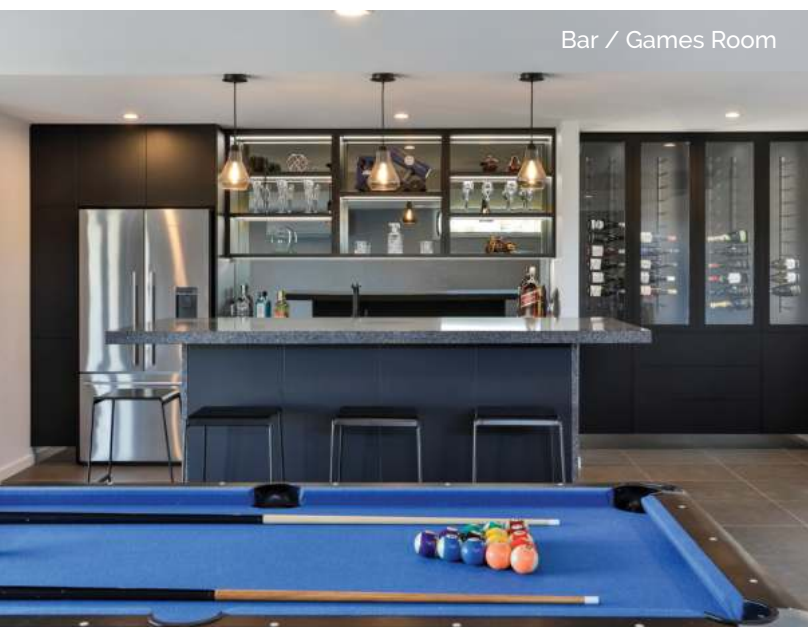
Scullery

Benchtop: A1 Benchworx - Prime Stone Aoraki 20mm
Cabinets: Melamine 1/4 Thorndon Cream Velvet
Floating Shelves: Bestwood - Melamine Coastal Elm, Wilderness
Electrical: HPM Life Series Sockets & Switches

By [Mastercraft Kitchens Tauranga](#)

Designed by [Alexandra Riddell](#)

Entertainers Envy



Bar / Games Room



Scullery

This incredible full-scale project will whet the appetite of those doing an entire home renovation. Working within a minimalist/contemporary theme, you will find plenty of inspiration here with up-to-the-minute design features.

In the kitchen, the island is a statement piece where the angled benchtop is a striking contrast against the symmetry of the wall beyond it, and yet connects to it with the continuation of engineered stone in the splashback.

Light hues and LED lighting define the cooking space as a focal point, framed by darker cabinetry that extends right up to the ceiling, illuminating the space.

Fully integrated appliances create clean lines for a contemporary aesthetic.

The scullery, in crisp white hues, allows for the 'business end' of cooking and entertaining to be tidily tucked away out of sight.

Scan the QR Code to see more on this kitchen and other bespoke joinery by Mastercraft Kitchens throughout this home, including wardrobes, laundry, and bar/games room.

Benchtops & Splashback: Silestone - Pearl Jasmine

Cabinets: Designatek - Milan Square Design in White Satin & Slate Black, Vinyl Wrapped

Lighting: Häfele Look LED Lighting

Electrical: PDL Iconic Sockets (Black) & Switches

Acknowledgements: Fowler Homes Otago

Bar

Cabinets: OnBoard - Stylelite Super Matt Black

Benchtops: Titanium Dark Grey

By Mastercraft Kitchens Otago

Designed by Kirsty Davis Kitchen Design

Quickstep In The Kitchen

This glorious double galley kitchen draws parallels with the quickstep, which when danced well, utilises every inch of floorspace with elegant lines, and dynamic energy.

For a busy family, the kitchen was designed to open up and connect with the existing outdoor entertaining area, with workspaces flanking a central island.

This creates distinct zones, and space for everyone to move freely around and access the outdoor entertaining area.

Features include a zone dedicated to the twins of sanity (coffee and wine), and a butler's pantry which extends the storage space and provides a nook for the large fridge to be tucked away from the main kitchen.

A calm and natural combination of materials were used with 'Warm White' and 'Vintage Ash' melamine cabinetry, finished with a polished stone benchtop and a delightfully sassy coffee zone splashback.

Benchtops: A1 Benchworx - Prime Stone Athena, Polished

Cabinets: Bestwood - Melteca Warm White, Natural, & Melamine Vintage Ash, Timberland

Handles: Archant - Edge Straight

Splashbacks: Both by Glass Art - Main Kitchen: Designer Lucy G. Drinks Station: Stock Photo

Hardware: Häfele - Cutlery Inserts, Pullout Bins, Banio Drawer Shape, Nova Pro Scala Oil/Sauce Pullout

Acknowledgements: Architect: Johnson Brierley Architecture. Builder: Brad Jones Builders

By Mastercraft Kitchens Tauranga

Designed by Kristen Reid & Jes Gordon



SCAN ME

Symphony of Style



Not afraid to be bold, the owners of this contemporary architectural home on the Whitianga Waterways wanted a show-stopping kitchen that met the practical requirements of a big family who love to entertain.

A glamorous aesthetic has been achieved by selecting materials and textures that are stunning on their own, yet combine in a symphony of style.

Competing light and dark elements are connected together by the granite benchtop and splashback which provides dynamism and drama. Mosaic tiles in a pearlescent gold adorn the wall and scullery splashback, creating a soft balance.

The full-sized open-shelf scullery makes food preparation and high-use functions both easy and tidy, leaving an uncluttered and beautiful space to take centre stage for cooking, serving and entertaining.

Note the drop in levels with this island bench – creating a clever zone for additional activity.

Our project extended throughout this exquisite home to include bathroom vanities, laundry, a hide-away study nook, a built-in bookshelf and more, all which continue the hues and style of the kitchen. Scan the QR code to see more.

Benchtop & Splashback: Pacific Stone – Granite Cococobana

Low Bench & Scullery Benchtop: Pacific Stone – Dekton Aura

Cabinets: Dezi Natek & Plytech – Crown Cut American Oak Ply in Black Stain & Ecru

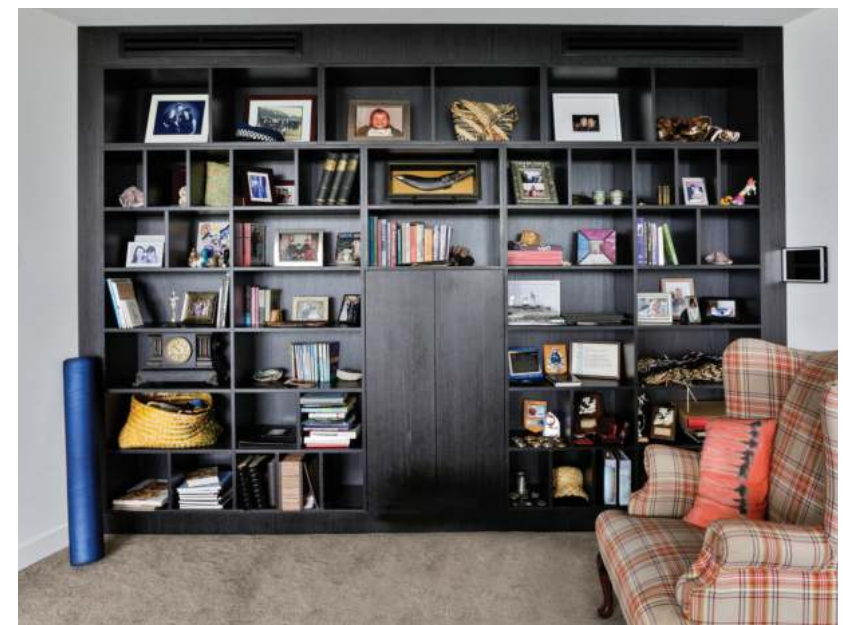
Scullery Cabinets: NZ Panels – Melamine, Sea Fog

Electrical: PDL Iconic Styl SH Sockets (Black)

Acknowledgements: Architect: Pacific Environments.
Builder: LBG Builders

By Mastercraft Kitchens Whitianga

Designed by Carol Harker



Mod Cod



This brand-new rural home has a strong 'homestead' aesthetic, so a blend of Cape Cod and Farmhouse styles was a natural fit.

Marrying traditional style with new conveniences, such as the Shaker-style cabinetry and window cabinets with integrated appliances and LED strip-lighting, means you truly end up with the best of both worlds.

Features include a striking blue hue used on three sides of the island bench which pulls out the subtle blue tones of the benchtops. Next is a generous scullery, with both closed and open shelf storage that has easy lines-of-sight for high-use items and well-executed task lighting. Also, a very adult 'bar' zone has been included, adding further sophistication.

Porcelain is a highly durable and easy-to-clean surface making for a very practical, stunning feature as a benchtop, and here extended as a splashback.

Other areas of the home were included in this project including a bar and laundry. Scan the QR code to view.

Benchtops & Splashback: Counter Concepts - Dekton Entzo Natural

Cabinets: Designatek - Shaker Style, Melteca, Warm White

Sinks: Burns & Ferrall - Undermount Double Stainless Steel. Scullery: Butler Farmhouse Sink

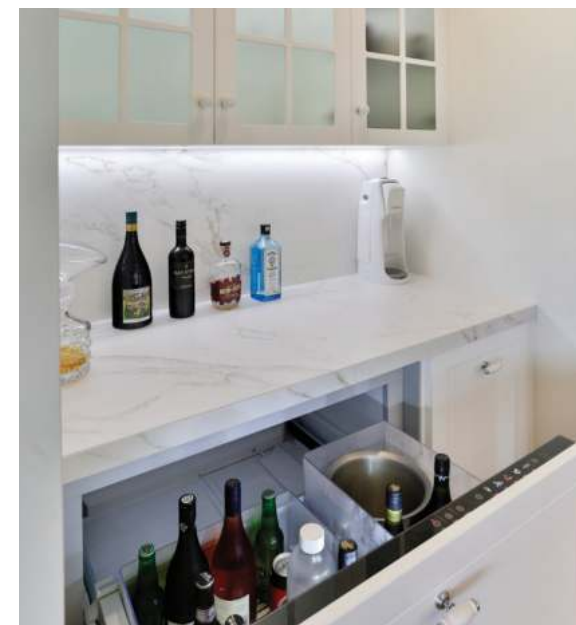
Appliances: Fisher & Paykel - Integrated Cool Drawer & 120cm Freestanding Cooker

Electrical: HPM Life Series Sockets & Switches

Acknowledgements: Highmark Homes Wairarapa

By [Mastercraft Kitchens Wairarapa](#)

Designed by [Richard Carroll](#)



Smooth Transition



SCAN ME



Aaaand breath.... Our beloved kiwi baches/cribs provide the opportunity to pause, rest and forget the demands of our busy day-to-day lives.

The brief for this beachside kitchen was for a carefree space that connects effortlessly with the outdoor entertaining area and views beyond.

The result is a design that achieves this by employing a combination of semi-industrial and Scandi aesthetics, and a layout which encourages connection and relaxed living.

An informal atmosphere has been created by choosing stainless steel on the island bench and plywood cabinetry in two colour tones featuring laser-cut grips.

The inclusion of open shelving above the cooktop adds to the informal vibe. For the indoor/outdoor bench with a sliding window partition through the middle, stone (a necessarily solid material that could weather the elements) was a natural choice.

This bench features a wide section that functions as an outdoor bar leaner and indoor kitchen servery.

Benchtop: Pacific Stone - Granite Atlantic, Honed

Cabinets: Plytech - Birch Premium Pre-Lacquered Ply & Futura Matt Black Ply

Hardware: Blum Tandembox

Sink: Burns & Ferrall

Electrical: PDL Iconic Sockets & Switches

Stainless Steel Features: The Workshop, Whangamata

Acknowledgements: Architect: Alignworks. Builder: Warwick Hamilton

By [Mastercraft Kitchens Whangamata](#)

Designed by [Carly Mohan-Druce](#)

Shine On

A crisp white kitchen with a subtle touch of bling, there are plenty of clever design features here.

The large central island benchtop of engineered stone has a generous over-hang, and combined with waterfall ends, creates ample space for tucking away the bar stools.

Selecting a darker, timber veneer panel on the seating side is a genius idea because, well, shoes. It also connects with the darker tones of the ceiling and pairs with the floating shelves beyond.

The pantry features clever pull out drawers - a smart design that's very popular in many of our kitchens. Pull out, don't reach in!

The extended working bench combines style and practicality with an easy-clean stainless steel surface with a linen finish, atop lacquered white cabinets.

A beautiful and dynamic feature wall has been created by extending the splashback, made of a pearlescent mosaic tile that reflects movement.

Island Benchtop: Silestone - Desert Silver Suede

Back Benchtop: Classic Stainless - Stainless Steel, Linen Finish

Cabinets: White - Lacquered Resene Half Sea Fog, Satin Finish.

Island Panel & Floating Shelves: Prime Art Veneer American Oak Planked Rustic coated in Woca Diamond Oil Active Concrete Grey and Driftwood Lye Grey

Handles: Archant- Furnipart Edge Straight, Anthracite Gunmetal

Hardware: Blum - Legrabox Drawers & Space Tower, Silk White

Sink: Blanco Silgranit Subline 480/320-U Double

Splashback: Tiles, sourced by client

By Mastercraft Kitchens Whangarei

Designed by Trinity Interior Design



SCAN ME

Black Tie Event



SCAN ME

This very adult kitchen is a celebration of contemporary minimalism. The constraint of using one colour has resulted in a luxurious and bold kitchen that exudes sophistication.

Strong, clean lines have been achieved by using a single style and colour of cabinetry. Handle-less push-to-open technology conceals its function, leaving an uncluttered space to enjoy.

Appliances are hidden behind integrated doors, enhancing the sleek minimalism of this space.

Juxtaposed against the vertical texture that dominates the cabinetry are strong horizontal lines surrounding the work zone, and in the design of the island bench.

Opulence is further established in granite benchtops featuring gold and white seams, and extending vertically as a feature splashback.

The island bench becomes a defining feature of the room with its asymmetric bench top design – almost an object d'art!

The kitchen cabinetry extends seamlessly into the living space, which opens to reveal an extensive bar and servery. This project features a divine dressing room, bathrooms and a bar. Scan the QR code for more photos.

Benchtops & Splashback: Granite, Titanium Gold, Suede

Cabinets: Prime Panels - American White Oak stained in Evo Black

Hardware: Blum - Legrabox & Servodrive, Häfele - Pocket Doors

Task lighting: Häfele - Ambient Warm Strip Lighting

Walk-in Robe: Melteca Burnished Wood

Electrical: Clipsal Saturn Series Sockets

By Mastercraft Kitchens North Canterbury

Designed by Kristen Reid



Lofty Ideals



SCAN ME



It takes a talented team to create a kitchen that holds its own in such a voluminous space as in this new build.

The use of natural plywood as the primary material, anchored by black in a variety of textures, has created a sleek and dynamic contemporary kitchen.

Plywood with exposed edges is very much on trend, with the natural wood emphasising the lightness and space of the room, reflecting the flooring and exterior cladding.

Gorgeous textures are found in the tiled splashback and matt surface of the jet-black granite benchtop, which features a black anthracite sink.

Additionally, the black and wood hues have been woven together in open shelving spaces, which neatly ties everything together.

Making use of the island bench as shelving space for displaying and storing items for entertaining is a clever touch and adds interest to the space.

This is another large project that continues the kitchens' contemporary minimalist look throughout the home. Check out the full project via QR code.

Benchtop: Artisan Stone - Granite Jet Black, Honed

Cabinets: Lacquered Birch Plywood in 'Natural' and Polaris Matt Black with exposed edges

Hardware: Häfele, Archant, Stefano Orlati & Fit

Sink: Häfele - Undermount Black Anthracite

Splashback: Mosaic Black Tiles

Electrical: PDL Iconic Sockets & Switches (Black)

By Mastercraft Kitchens Southland

Designed by Malcolm Butler





Bold As Brass

Occupying centre stage in this home is a galley kitchen that needed to make a good impression with a directive from the owners to 'be bold and bring the bling.'

A love of brass directed the aesthetic, so the design incorporates brass features in perfect measure. These include a stunning negative detail under the bench, an under-mounted double sink, and mosaic tiled splashback – which adds a mesmerising texture.

Selecting flat-panel cabinets in a dark blue hue with concrete-look stone benchtops has created a beautiful stage for the brass to sing from.

The contemporary geometric handles finish this look off nicely (and also feature in the master wardrobe).

This glamorous front-of-house zone is supported by an extensive butler's pantry in behind it that can be hidden from view when entertaining.

- Benchtops:** Engineered Stone - Concreto Suave
- Cabinets:** Prime Panels - Flat panel, Devious, with 18mm brass negative detailing
- Handles:** Sourced by client
- Sink:** Vita Brass Double Bowl Undermount
- Splashback:** Tile Warehouse - Mosaic Tiles 'Vee Mosaic'
- Electrical:** PDL Iconic Sockets & Switches (Black)
- Acknowledgements:** Highmark Homes Wairarapa

By Mastercraft Kitchens Wairarapa

Designed by Katie Forrester





Class Act



Feast your eyes on this exquisite contemporary kitchen that encompasses some of the best storage and kitchen technology options available.

There is a subtle mystery to this kitchen with hidden drawer-in-drawer technology and mirrored glass cupboard fronts. The kitchen invitingly wraps around a wall to keep the 'secrets of the kitchen' out of view, and bifold doors that open to reveal an artful range of storage options.

Interchanging mirrored and matt-black surfaces provides tonal changes that give this black kitchen its extra pizzazz.

Further, selecting white splashbacks and benchtops in a mix of engineered stone and granite provides visual contrast, and grounds the black.

Orienting the island bench to allow those doing the hard work to enjoy the sumptuous view means being in the kitchen is never a chore.

A wine fridge at the end of the bench, and away from the action, is a win for guests.

Island Benchtop & Splashback: Granite Heaven - Trendstone Stat Venato, Polished

Other Benchtops: Granite Heaven - Granite Absolute Black, Honed

Cabinetry: Laminex - Melteca Soft Touch Acrylic, Pitch Black

Hardware: Blum - Bifold Soft Touch Push to Close

Acknowledgements: Architect - Arcline, Builder: Pearse Construction

By Mastercraft Kitchens Whangarei

Designed by Jillian Kake

Fresh Perspective



For this family, a key part of their renovation was a re-design of the kitchen to create a stylish and functional space that could cope with the rigours of raising small children.

For a high-demand area which is a hive of activity, employing hard-wearing materials, safe storage and a design that fosters connection were key considerations.

However, you do not have to sacrifice style for function. There is plenty of sophistication here with dual tones of cabinetry, integrated rangehood and that eye-catching splashback creating real wow-factor.

A U-shaped design with a breakfast bar invites social engagement that children (and the in-laws) enjoy whilst keeping food preparation at a safe distance.

Well thought-out storage has been designed here, with a scullery that has a pocket door, and a mix of open and closed cabinets. A further cupboard with power points provides a charming 'breakfast bar' zone.

Benchtop: Pacific Stone - Pacific Quartz, Spring Snow

Cabinets: Laminex - Melteca Snowdrift, Naturale. Melteca Black, Pure Grain

Hardware: Hettich - Pocket Sliding Doors, Blum - Movento Drawer Runners, Fit - Pull-Out Bottle Unit, Giamo

Sink: Burns & Ferrall BFD 660 R25

Lighting: Stefano Orlati - LED Strip Lighting, Slimline, Matt Black

Splashback: Glass Art - Designer Lucy G

Appliances: Free Standing Range Parmco AR-900-OBS

By Mastercraft Kitchens Taupo

Designed by Phil Greene





What moments will you make in your new Mastercraft Kitchen?

Need a Kitchen?



GET IN TOUCH

Mastercraft Kitchens is the industry leader in kitchen and joinery design and manufacture throughout New Zealand.

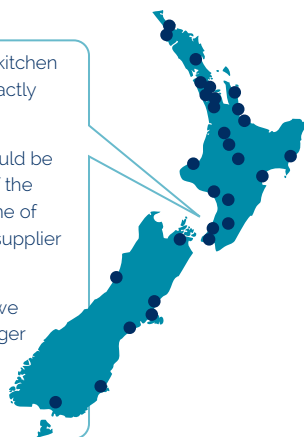
Your kitchen will be designed and manufactured by locals who pride themselves on creating functional, stylish kitchens that clients will adore for years. We also specialise in bespoke joinery throughout the home – bathrooms, wardrobes, storage areas, office nooks, built-in furniture and more.

"Can I say how truly amazing our kitchen is – I absolutely love it and it is exactly what I was hoping for.

I honestly thought the kitchen would be one of the most daunting parts of the build and by far you've made it one of the easier and hands down best supplier we dealt with.

When we met you that first time we decided instantly we were no longer going to get an alternative due to how easy you made it for us."

– S & M McDonald, Wellington



MASTERCRAFT
KITCHENS

Need a Sparky?



GET IN TOUCH

Mastercraft Electrical is a nationwide network of highly qualified, experienced electricians.

Our group of locally owned and operated businesses provide a range of electrical solutions, including the most up-to-date services for your new build or renovation.

For exceptional, friendly and on-time service contact Mastercraft Electrical.

"Mastercraft Electrical turned up when it mattered, consistently going the extra mile and showing calm professionalism, nothing was a problem.

They provided so many services for our modern home including, entry gates, speaker systems, alarms & video entry phones, lighting, water fountains, spa pools, computer cabling & patch panelling, under-floor heating and the complete inside and out wiring modernisation."

– S Lobb, Auckland



MASTERCRAFT
ELECTRICAL

0800 67 67 67

www.mastercraft.co.nz

info@mastercraft.co.nz

