

MASTERCRAFT[®]
KITCHENS

Kitchens

2022
EDITION



For these and more amazing kitchens from Mastercraft Kitchens, scan this link:



Welcome to our 2022 Look Book

Kristen Reid, Head Designer –
Mastercraft Kitchens

Welcome to the 6th edition of our popular Mastercraft Kitchens Look Book. In this edition, we feature 16 amazing kitchens from across Aotearoa.

The year ahead

Trend-wise, 2022 will be more about celebrating individually in our homes and kitchens – expressing ourselves through lots of colour and creatively mixing textures and materials. Having spent more time at home over the past couple of years, we are all looking at enjoying these practical spaces, making them beautiful and uniquely ours.

The Mastercraft difference

With locations throughout New Zealand, we are a tight-knit team of experienced designers and cabinetmakers that specialise in bespoke kitchen and joinery solutions.

We collaborate with our clients to create kitchens that suit each family's unique needs and desires. Each kitchen we create is locally made, unique and of premium quality.

I hope you enjoy our 2022 Look Book! For more cutting-edge kitchen inspiration I invite you to visit our online gallery at mastercraft.co.nz



Come Gather 'Round



When you get the chance to start over with a new build, it is the golden opportunity to create spaces that truly work for you. For Phillip and Raquel Mitchell, having their kitchen dreams made real has changed the way they create, relate and operate!

Their key requirements were to incorporate excellent storage and functionality, and crucially having that golden 'work triangle' to make the kitchen easy to use. Visually, the owners wanted an open beautiful space in which to entertain friends and family.

The expansive scullery is the secret ingredient here as it substantially increases overall storage and allows the main kitchen to enjoy its minimalist vibe.

"We love the open shelving in the scullery" says Raquel. "It's great to be able to reach things so easily! I love that my two-and-a-half-year-old can reach out for her own plates and cups. Also, you tend to use things more because you can actually see what you've got. Having a scullery is awesome, you can never have too much storage."

"We now spend more time together in the kitchen than any other room in the house as a family. The large island means that my daughter can be drawing, while I cook dinner and have a chat with my husband at the same time."

"From the moment I walked into the Mastercraft Kitchens Kapiti showroom, Amber was able to quickly understand my vision for this project. We were impressed with her knowledge and expertise around kitchen layout and functionality, and she offered some great tips that have made a huge difference."

Benchtops: Quantum Quartz Engineered Stone in Michelangelo

Cabinets: Bestwood Simply White Embossed/Melteca Aged Ash Puregrain

Handles: Oblique by KBH

Hardware: Hettich Atira Drawer Runners

Sinks: Abi Interiors - Vita

Splashback: Tiles

By: Mastercraft Kitchens Kapiti

Designed by: Amber R N Downie



Viva la Renovation



Partnering a limited budget with bespoke design is a delicate balancing act – especially when the project in question is a renovation. This charming French Country-style kitchen is the exceptional result of getting every detail of this project just right.

Kitchen redesign was the first priority for homeowner Susan Murphy when she purchased her townhouse. The previous kitchen was a tiny, unfriendly space with many original features and fittings of the seventies.

Despite the limited budget, Susan had a clear idea of the style she wanted for her dream kitchen. "I knew this was going to be a bespoke kitchen, so I looked at a lot of options including builders, joiners, and big-box DIY stores but finding someone to give me what I wanted was proving a challenge" she says. "I knew of Mastercraft Kitchen's reputation, and when I visited their Palmerston North showroom, I saw exactly what I wanted and asked for a quote."

Designer Jenny Low was very new to Mastercraft Kitchens when she met Susan to discuss this project, but straight

away she understood what Susan wanted to achieve in the space. "She was enthusiastic and had great ideas to consider. I had very clear ideas of the 'look' I wanted, and that I wanted to maximise the vertical space for storage but was 'stuck' on the configuration. This is where Jenny worked her magic, offering a few concept designs for us to consider, and we locked in the best design that maximised the things we needed. Jenny was so good at understanding what it was we needed from a kitchen."

The new kitchen now features a full height tiled wall which increases the sense of space and allows the overhead cabinets and pantry to extend comfortably to the ceiling. In the other direction, kick drawers (in place of kick boards) extend the functional storage capacity of this kitchen without adding to it's visual load.

The clean, architectural lines of the benchtop balance with the detail of the profiled doors and drawers with their elegant brass handles.

This kitchen is living proof that you can get a stunning, bespoke kitchen on a budget.

Benchtop: Laminex – High Pressure Laminate (Rural Oak)

Cabinets: Dezinatex Thermoform – Classic profile (White Satin)

Handles: Archant – Delamore and Portabello

Hardware: Hettich, Integrity

Sinks: Carysil – Waltz560FE

Splashback: Subway Tiles to Ceiling

By: Mastercraft Kitchens Palmerston North

Designed by: Jenny Low



Tall order



Always accentuate the positive, and in this case, this breathtaking home has overhead space and light aplenty to show off.

The hero of the day is the towering feature back wall with its snowdrift white cabinetry at the bottom supporting a bank of sumptuous oak cupboards and shelving at the top. An elegant teal splashback wall with an intricate herringbone profile links the two cabinet structures.

The same colour and material combo is echoed on the side wall which provides functional storage closer to the dining area and lounge.

The central island also has its own personality, finished in honed granite, its dark charcoal adds another dimension to the sophisticated colour and material palette.

A scullery and office sit on the left and right of the feature wall providing useful work spaces that keep clutter in the main kitchen to the bare minimum.

This kitchen is no mean feat. Combining a rich colour palette and numerous materials to create a stunningly

cohesive design, this is a perfect example of design that takes full advantage of its setting.

Island Benchtop: Jet Black Granite – Honed Finish 30mm

Hob/Scullery Benchtops: Michelangelo QQ – Natural 30mm

Cabinets: Doors and Panels – Snowdrift Melteca

Floating Shelves: Planked Urban Oak – Melteca

Hardware: Blum – Antaro Grey

Handles: Altare

Sink: OnBoard Savio

Splashback: Mini Herringbone 107 Turquoise HER440 – Black Grout

By: Mastercraft Kitchens Wellington

Designed by: Jo Best



Chalk it up



Ever wondered what happens when serial DIY renovators build a new home, and must work with a kitchen designer?

For these new Taupo residents, that was precisely the situation. With a long history of DIY renovations, working with a kitchen designer was unfamiliar territory.

Mike and Colleen Collins brought their concept and layout ideas to Mastercraft, and asked them to incorporate those, whilst providing further options that would work.

"We had been storing some demolition Rimu for 25+ years and were keen to see this integrated into the design. Additionally, we were after a clean look that would not date, including some core concepts such as a narrow window at bench level, a walk-in pantry, a large island free of a sink or hob, and lots of drawers and storage options."

"We found that the knowledge and experience they provided gave us considerably more options for materials and fittings than we could have accessed by ourselves."

The overall design layout makes this kitchen a real joy to

be in. Everything just flows without any effort. From the Ikon extra-large sink to the positioning of the work areas, appliances, island bench and storage. It all just works so well.

And Mike's top tip for others? "Draw out your layout ideas (life size if possible). Chalk on the driveway works well as it enables you to walk through the layout and check the practicality and placement of appliances and work areas."

Benchtops: Granite and Stone

Cabinets: Prime Melamine Embossed in Carbon

Handles: Stefano Orlati

Hardware: Alto Soft-Close Drawers

Sink: Ikon Sink Station

Splashback: Tiles

By: Mastercraft Kitchens Taupo

Designed by: Vicki Greene

Nights in White Satin



Lighting is a major talking point in this timeless, elegantly crafted Auckland kitchen courtesy of Mastercraft Kitchens New Lynn.

LED kick-board strips reflect off the highly polished wooden floors and an overhead LED strip bounces light off the ceiling – both giving the kitchen an otherworldly mystique – especially in twilight hours.

In the middle, a central island / breakfast bar topped with Smartstone Engineered Stone faces the outside deck and pool. Behind the island, a bank of wall-mounted cabinets separate the elevated dining area from the kitchen.

The beautiful cabinetry in lacquered satin continues into the dining area with a sideboard buffet cabinet.

This is a tasteful design –not trying to compete with its environment but embracing and enhancing it. The clean white lines and satin finish are only punctuated by the top quality appliances.

The elegant handles are supplied by Stefano Orlati.

Benchtop: Smartstone Engineered Stone in Santorini

Cabinets: Lacquered Satin Finish

Handles: Stefano Orlati

Lighting: Hafele LED Strip Lighting

Hardware: Hafele / Blum

Sinks: Burns and Ferrall

Splashback: White Tiles

By: Mastercraft Kitchens New Lynn

Designed by: Petra Brebner





Light touch

This stunning kitchen is tastefully proportioned to complement the home's breathtaking views over Lake Hood in Ashburton.

Designer James Donaldson has painted a masterpiece here, balancing the dark Basalt Black benchtops and high-gloss Carbon drawers with the light American White Oak cabinets and teal Splashback which extends the home's colour palette into the kitchen space. Strong patterns and textures have been avoided in favour of elegant colours, tactile materials and subtle lighting.

The Neolith sintered stone benchtop island features an angled waterfall, subtly breaking with the kitchen's key horizontal and verticals lines. To avoid a sense of heaviness, the rest of the island floats above the floor with the help of under-cabinet LED lighting.

An expansive scullery completes the piece and contains sink, hob and plenty of shelving and cupboard space.

Benchtops: Neolith – Basalt Black

Cabinets: EGR Stylelite in Carbon and American White Oak Veneer

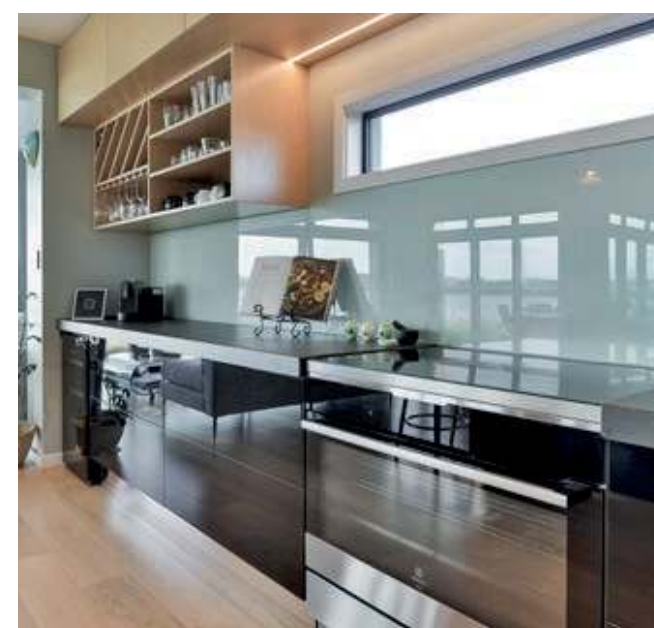
Hardware: Blum Legrabox – Soft Close (push to open)

Sinks: Acero – Vermont Oxford

Splashback: Glassart – Wall colour glass

By: Mastercraft Kitchens Ashburton

Designed by: James Donaldson



Opening move



For this renovation, the brief was to open up the kitchen space and allow room for a more socially friendly kitchen. Dark and gloomy was out – lighter and brighter was in.

To achieve this, designer Amber Downie from Mastercraft Kitchens Kapiti opted for a minimalist, contemporary feel to open up the kitchen. Soft-close handleless drawers and cupboards in Alabaster Gloss allow for a cleaner, sleeker look. The Stellar White Engineered Stone benchtop features double water-fall ends for a finished look. The central island borrows the same materials and is deliberately clutter-free with the breakfast bar inviting social interaction throughout the day and night.

Offering extensive storage space, the breakfast bar wall features floor-to-ceiling cabinets set around a flush-set double fridge. The high gloss cupboard doors reflect light around the kitchen enhancing its airiness.

To complement and add a point of difference to the clean kitchen cabinetry, a set of overhead cupboards finished in Timbalook Hokitika sit atop a blue tiled wall / splashback.

Benchtops: Treadstone engineered stone in Stellar White

Cabinets: Stylelite in Alabaster Gloss / Sage Doors in Timbalook Hokitika

Hardware: Hettich Atira Drawer Runners

Sink: Burns & Ferrall Double Bowl

Splashback: Blue Tiles

By: Mastercraft Kitchens Kapiti

Designed by: Amber R N Downie

SUPER FEATURE

Business Class



One significant advantage of using Mastercraft Kitchens is that the same company that can design and produce a stunning kitchen, can also design and produce cabinet solutions for the rest of the home, ensuring consistency and cutting down on suppliers.

This breathtaking home in Wanaka showcases Mastercraft's array of talents and capabilities in practically every room of the house including kitchen, bathrooms, dining, bedrooms, media rooms and even garages.

Island Benchtop: Engineered Stone – Bianco Calacatta

Back Benchtop: Engineered Stone – Tebas

Cabinets: American Oak - Black stain

Hardware: Grass Scala – Soft Close

Undershelf Lighting: Hafele Look Lighting

Sinks: Blanco Double Bowl in Anthracite

Splashback: Tiles

By: Mastercraft Kitchens Otago

Designed by: Robyn McFarlane, Tom and Kelly DuPont

SUPER FEATURE



Earth, Wind, Stone.



Many kitchens seek to reflect the natural materials and colours that we draw so much inspiration from. Others might seek out a bold character such as 'industrial chic' for example.

This breathtaking kitchen from the Bay of Islands cleverly combines both the natural and the industrial to take centre-stage in this beautiful home.

The slab-style bench-tops are crafted in Silestone Alpina White providing a timeless appeal. The centre island also features a waterfall end facing the entry point, and a wooden pillar at the other which anchors the island in the room.

The splashback complements the bench-tops.

The Soft Touch Acrylic cabinet drawers and doors top off the look with Hafele Luxe Aluminium Recessed Handles that run the width of the drawers.

This is a superbly functional design, with oven, fridge and sink all in close proximity to each other.

Benchtops: Silestone Alpina White

Cabinets: Melteca Soft Touch Acrylic in Metallic Charcoal

Handles: Hafele Luxe Aluminium Recessed Handles

Hardware: Hafele Alto

Sink: Acero Rome

Splashback: Silestone Alpina White

By: Mastercraft Kitchens Whangarei

Designed by: Jillian Kake



Zen out of Zen



Bright and breezy, with clean, elegant lines, handleless drawers, soft task lighting and delicate wood panelling above the hob-side window, this beautiful kitchen is an oasis of Zen.

The clean lines project effortlessly into the living area welcoming guests to sit at the breakfast bar and take a moment.

In addition to this captivating kitchen, Mastercraft Kitchens also designed the cabinets for the bathrooms and laundry ensuring consistency of theme, materials, and workmanship through-out the home.

Benchtops: Caesarstone Engineered Stone in Airy Concrete

Cabinets: Dezinattek in Ecu Matt and Ranfurly Oak (feature flat panels)

Handles: Gola Negative Recessed Handles

Hardware: Blum Antaro (Soft Close, Touch to Open, Servo-drive)

By: Mastercraft Kitchens New Lynn

Designed by: Petra Brebner



Take Me Home



Designing a modern kitchen around an existing or older layout is not a job for the faint-hearted. As part of a major renovation makeover, Mastercraft Ashburton were tasked with this exact challenge.

The result is this stunning, country-style U-shaped kitchen, bathed in natural light and awash with character.

A large kitchen island / breakfast bar takes centre stage here, under an expansive ceiling of sky lights. Beautifully crafted, with a set of brass-handled drawers in Charcoal Blue on one side, it is capped with a Caesarstone Engineered Stone benchtop in Snow White.

At one end, a facing oven nook features inset shelving on two sides and a brass piping feature on the back wall nestled over a Belling Sterling Duel Fuel Oven.

Banks of Dezinattek painted cabinets finished in Half Tapa flank the kitchen island complementing the Charcoal Blue of the central island.

The elegant butlers sink, courtesy of Cabro, overlooks a large window and caps off the old-world country charm of this delightful kitchen.

Island Benchtop: Caesarstone Engineered Stone in Snow

Cabinets: Dezinattek Painted MDF in Half Tapa and Charcoal Blue

Handles: Archant / Sopersmac – Sarnen D Handles (Brass) / Knobs (Brass)

Hardware: Hafele Alto – Soft Close

Sinks: Cabro Single Butlers Sink – Sergio Villa in White

By: Mastercraft Kitchens Ashburton

Designed by: Mastercraft Kitchens Ashburton

Trading Spaces



What do you do when there isn't enough space in your renovation to accommodate a modern-sized kitchen? You strategically spill.

In this case, designer Simon Tansley has innovated with a peninsula bench that extends the kitchen into the dining area offering much more working room and storage as well as thoughtfully connecting these two spaces.

A floor-to-ceiling pantry wall also expands the kitchen accommodating a fridge, microwave and a vertical wine rack – conveniently positioned at the dining table end.

Simon worked together with his client, Campbell from Findlay Construction, to get the best use out of the space by taking out walls to maximise the number of units.

Making use of odd or awkward spaces is easy with a number of elegantly effective solutions from hardware suppliers. In this case, a Hafele Base Corner Mondo unit ensures appliances and accessories are easily accessible.

A Stefano Orlati LED Slimline Concealed Track with hand sensor provides fantastic task lighting over the hob/oven.

Extending the minimalist character of this kitchen, Archant Straight Edge handles unobtrusively adorn the doors and drawers.

Benchtop: Trendstone Engineered Stone in Cala Michelangelo Quartz

Cabinets: Integrity Treadstone Stylelite Board – Arctic Stylelite Trumatte

Handles: Archant – Straight Edge

Hardware: Hettich Atira

Sinks: Integrity Adige Stainless Steel

Splashback: Tiles

By: Mastercraft Kitchens Palmerston North

Designed by: Simon Tansley



Zest For Life



This fun and funky kitchen fit out was for a duplex townhouse development aspiring to have a higher design standard that most spec developments in the area.

The stately Methven Oak Wilderness and Ashen Walnut Timberland door panels contrast wonderfully with the vivid green citrus splashback and island frontage. As a point of difference the breakfast island features Arctic White Velvet cabinet doors and drawers on the working side of the unit.

In line with its contemporary architectural flavour, the kitchen's sleek lines mostly avoid handles, preferring integrated handles courtesy of Stefano Orlati.

The pantry does feature Archant Pescara Brushed Nickel handles. On the inside a DUSA Pantry system to ensure Tardis-like storage capabilities.

LED lighting over the hob rounds out this delightful kitchen from Mike Tisdall of Mastercraft Kitchens Hobsonville North West.

Benchtops: Trendstone Engineered Stone Cala Grigio

Floor units and pantries: Bestwood Melamine Methven Oak Wilderness

Overhead doors: Bestwood Melamine Ashen Walnut Timberland

Island doors: Bestwood Melamine Arctic White Velvet

Handles: Stefano Orlati – Negative Details Profile in Silver

Pantry Handles: Archant Pescara in Brushed Nickel

Pantry Hardware: DUSA Pantry – VS TAL GATE Pro

Hardware: Blum Tandembox – Antaro

Sinks: Burns & Ferrall – Aquis Cayman

Splashback: Image Glass – Tempered Glass in Citrus

By: Mastercraft Kitchens Hobsonville North West

Designed by: Mike Tisdall



Let there be light



Susan's kitchen journey started from the moment she and husband Steven decided to build their new home. She had heard good things about Mastercraft Kitchens, giving her confidence that she could entrust her home to our fantastic Tauranga team.

Spending some time living in Rome influenced her aesthetic preferences when deciding on the design elements and materials in the final product: "I was looking for robust materials – like the stainless-steel sink bench to leave appliances out on" says Susan. "Having an island bench was important to take advantage of the view, and I love wooden finishes. Additionally, I wanted a place in the kitchen to display my collection of ceramics."

Mastercraft Tauranga designed and delivered a stunning kitchen on point. The hero Island Bench features a wooden batten panel construction on the back and sides. The earthy tones of the wood are accentuated by the tiled flooring and provide a beautiful balance to the lovely Silestone island bench. Complementing the island, the oak floating shelves provide a pride-of-place for Susan's collection and feature under-shelf task lighting.

The pantry is itself a work of art. Beautifully constructed with solid oak shelving and finished in Resene Holly, the pantry provides a convenient spot for every item.

With a stunningly successful kitchen project behind her, Susan can offer some advice for others at the start of their kitchen journey: "Make sure you have plenty of easy-access storage. Having robust and easy-to-clean benches also, try and situate the kitchen so it has an outlook and plenty of natural light."

Island Benchtop: Pacific Stone – Silestone Eternal (Calcutta Gold)

Back Benchtop: Paramount Stainless – Stainless Steel

Cabinets: Melteca – Soft Touch Acrylic (Sky Scraper)

Island Panel: 20mm batten panelling

Handles: Enko Zephir Handle

Hardware: Hinges – Hettich Sensys, Drawers – Hafele Alto

Undershelf Lighting: Hafele

Sinks: Burns & Ferrall – Designer Range

Splashback: Pacific Stone – Silestone (Calcutta Gold)

By: Mastercraft Kitchens Tauranga

Designed by: Chrissy Dawson



What moments will you share in your new Mastercraft Kitchen?



Need a Kitchen?

Mastercraft Kitchens is the industry leader in kitchen and joinery design and manufacture throughout New Zealand.

Your kitchen will be designed and manufactured by locals who pride themselves on creating functional, stylish kitchens that clients will adore for years. We also specialise in bespoke joinery throughout the home – bathrooms, wardrobes, storage areas, office nooks, built-in furniture and more.

MASTERCRAFT 
KITCHENS

Need a Sparky?

Mastercraft Electrical is a nationwide network of highly qualified, experienced electricians.

Our group of locally owned and operated businesses provide a range of electrical solutions, including the most up-to-date services for your new build or renovation.

For exceptional, friendly and on-time service contact Mastercraft Electrical.

MASTERCRAFT 
ELECTRICAL

www.mastercraft.co.nz
info@mastercraft.co.nz

